



Enjoy luxury holiday  
home ownership at  
**Culzean Bay and  
Croyburnfoot**

Holiday Homes with  
stunning views across  
the Firth of Clyde, Isle of  
Arran and Ailsa Craig.



# Your holiday home journey starts here.

Culzean Bay and Croyburnfoot are quiet and restful, family-run holiday parks located along the coastline of Croy Shore in Ayrshire. Creating a unique place to stay, relax and explore the best of South Ayrshire.

When you think of our holiday parks, we want you to dream of your perfect holiday home. A place to go, where you can switch off, kick back and relax with everything you need at your fingertips.

Our parks offer a selection of new and pre-owned holiday homes from the UK's best-known caravan manufacturers.

Two or three bedroom models in varying lengths and widths are sited on our spacious pitches with stunning views of the Firth of Clyde, Isle of Arran, Carrick Hills and Ailsa Craig.





Ailsa Craig, granite islet, South Ayrshire council area, Scotland, at the mouth of the Firth of Clyde and 10 miles (16 km) off the coast of South Ayrshire, to which it belongs. It is nicknamed "Paddy's Milestone" for its location halfway between Glasgow and Belfast (Northern Ireland).

## Holiday Homes at Culzean Bay

**When you think of Culzean Bay, we want your holiday getaway to be your home from home.**

Owned by our family for over 30 years, we have developed, extended and evolved the holiday park to a standard we are proud of. Whilst improving the park, we were intent on maintaining the natural integrity of the beautiful woodland setting and protecting the wide variety of wildlife, flora and fauna, to which the woodland has been home for centuries.

We have meticulously planned the caravan pitches to blend with the surrounding countryside, whilst taking into account the needs of our caravanners. From this plan, we have produced a unique caravan holiday home park providing peace and tranquillity for the discerning caravan holiday home owner, whilst providing amenities such as a laundry room and children's play park to ensure a true home from home.



# Holiday Homes at Croyburnfoot

**Dream of quiet and a secluded sandy beach, allowing for the perfect holiday home.**

Croyburnfoot is a quiet and secluded, family-run caravan park next to Croy Shore beach. The park offers a selection of static privately owned caravans including new and pre-owned holiday homes from the UK's best-known caravan manufacturers. All our homes are on spacious pitches with stunning views of Croy beach, Culzean Castle, Firth of Clyde, Isle of Arran, Carrick Hills and Ailsa Craig. The beach front location includes a laundry room, a children's play park and uninterrupted access to the beautiful Croy beach.

The beach at Croy is sandy with rocky outcrops. The area is popular with walkers and the Ayrshire Coastal Path passes close by. The mile-long beach is backed by grassy areas, low-rise cliffs at one end, behind which can be seen the rolling hills of Ayrshire. There are views from the beach out over the Firth of Clyde towards the Isle of Arran.

To the south of the beach, Culzean Castle, now in the ownership of the National Trust of Scotland, towers above the cliffs and adds a bit of glamour to the natural beauty of this part of the coastline.





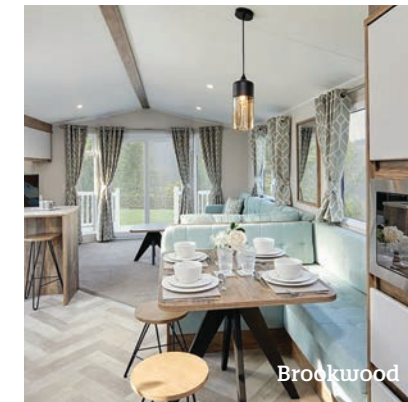
A space you will just love making your own.



Brookwood



Sierra



Brookwood



Castleton



Willerby holiday homes, are so much more than just four walls. They are spacious havens that have been carefully designed with you in mind. Packed full of all your home comforts as well as a wide range of luxury features, such as walk-in wardrobes and en-suite bathrooms, they are a home away from home that you simply won't want to leave.

- ✓ Energy efficient double glazing
- ✓ Gas central heating
- ✓ Double sliding patio doors to lounge
- ✓ Free-standing furniture
- ✓ En-suite WC
- ✓ Integrated microwave
- ✓ Integrated 70/30 fridge-freezer
- ✓ Optional integrated washer/dryer

*Willerby holiday homes images are for reference only and may not reflect our current stock. Please contact our sales office for year of manufacture and availability*



Manor





Holiday homes with first-class specifications both inside and out.

*Atlas holiday homes images are for reference only and may not reflect our current stock. Please contact our sales office for year of manufacture and availability*

# ATLAS

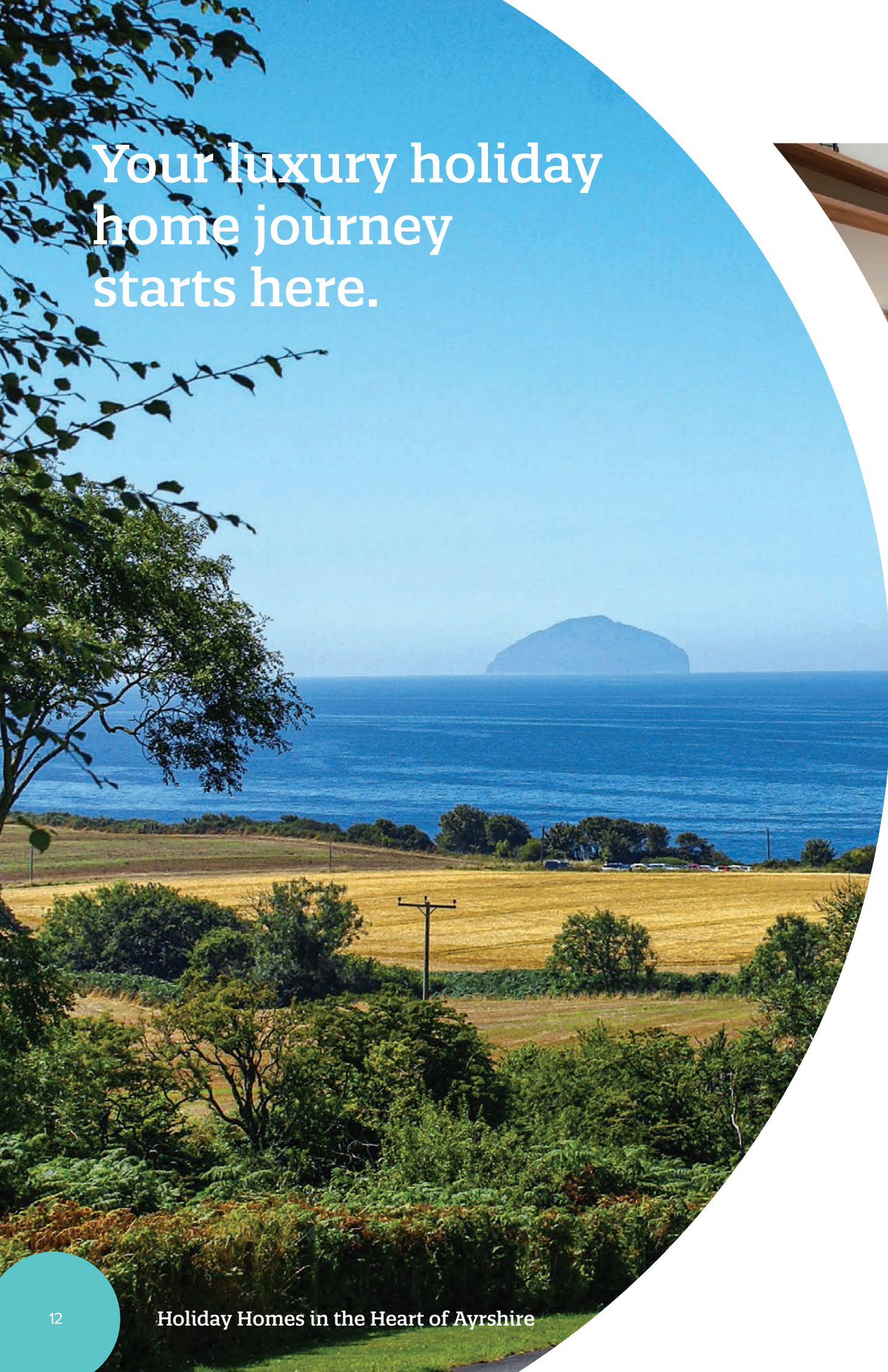
LEISURE HOMES

The Atlas holiday homes range features contemporary fabrics, stylish fittings and an array of practical features, all complemented by stunning exterior appearances ensuring that we have something to suit all tastes and budgets. Because the little things matter, our portfolio of holiday homes and lodges offers a hand-picked and bespoke selection of some of the finest products.

- ✓ PVC double glazing
- ✓ Central heating
- ✓ Rigid PVC exterior finish
- ✓ Free-standing furniture
- ✓ En-suite WC
- ✓ Integrated microwave
- ✓ Integrated 70/30 fridge-freezer
- ✓ Sockets with USB port
- ✓ Designer low energy interior lighting throughout



Your luxury holiday home journey starts here.



Stonewood



Stonewood



Stonewood



Baywood

*Victory holiday homes images are for reference only and may not reflect our current stock. Please contact our sales office for year of manufacture and availability*



**VICTORY**  
LEISURE HOMES

Designed to bring families and friends together, the living space of a Victory Leisure Home is filled with natural light from the wide front aspect French doors and windows. With spacious modern living space which is adaptable to meet the ever-changing needs of a modern family and design is enhanced through the comfortable warming tones of the furnishings.

- ✓ Double glazing
- ✓ Gas condensing combi boiler
- ✓ Thermostatic radiators
- ✓ Integrated fireplace
- ✓ En-suite WC
- ✓ 4 ring gas hob, electric oven and grill
- ✓ Free standing fridge freezer
- ✓ Stainless steel sink with coordinating tap



Stonewood





# Reasons for becoming a Holiday Home Owner

**01** You can have your home away from home throughout the season.

**04** You know exactly where you're going, and what to expect when you get here.

**02** Our parks are situated in some of the most stunning locations on the West Coast of Scotland.

**05** Our parks have often been described as a breath of fresh air, instantly allowing you to relax and unwind.

**03** Owning a holiday home is not having to worry about packing and unpacking

**06** Having the opportunity to leave the stresses of everyday life behind and enjoy spending time in the countryside has both mental and physical benefits.

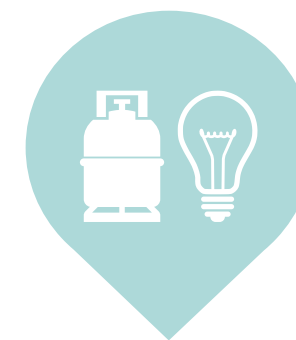


## Everything you need to know when buying your own holiday home.

Purchasing a holiday home is a big decision. There are many things to consider before taking the plunge. One of the most important factors is the cost. Here is an outline of some of the costs to consider when making your dream a reality:



**Annual Site Fees**



**Gas & Electricity**



**Insurance**

Our holiday homes are great value and have a spacious feel with their open-plan layout and neutral furnishings – all you could want from a modern holiday home.







Ayr  
(9 Miles)

### Ideally situated for many great day trips around the West Coast and Central Scotland.

**Ayr Racecourse**  
Home to the Scottish Grand National  
**Burns Cottage and Museum**  
New £22 million museum and restaurant

**Culzean Castle & Country Park**  
One of Scotland's most loved castles

**Heads of Ayr Farm Park**  
Fun and activities for all ages

**Isle of Arran**  
Great walks, shops, distilleries and food

**Ireland by fast ferry from Stranraer**  
Belfast in under two hours!

**Cruising on the Waverley Paddle Steamer**  
Last seagoing paddle steamer in the world

**Championship Golfing**  
Play the world-famous Trump Turnberry & King Robert the Bruce

**Fishing**  
Loch, river and sea fishing in Ayrshire

**Shopping**  
A great day shopping at nearby Ayr, Prestwick and Troon



← Arran

Culzean Bay 1/2 mile →

Girvan

Sales Office

Croy Shore Beach

Culzean Castle

↙ Ailsa Craig

Holiday Homes in the Heart of Ayrshire











**CULZEAN BAY**  
HOLIDAY HOMES

Knoweside, Croy Shore,  
South Ayrshire, KA19 8JS  
[culzeanbay.com](http://culzeanbay.com)

**CROYBURNFOOT**  
HOLIDAY HOMES

Croy Shore, Maybole  
South Ayrshire, KA19 8JS  
[croyburnfoot.com](http://croyburnfoot.com)

If you have any questions, call or email us on

Tel [01292 500 444](tel:01292500444), email [sales@culzeanbay.com](mailto:sales@culzeanbay.com) or pop into the sales office.